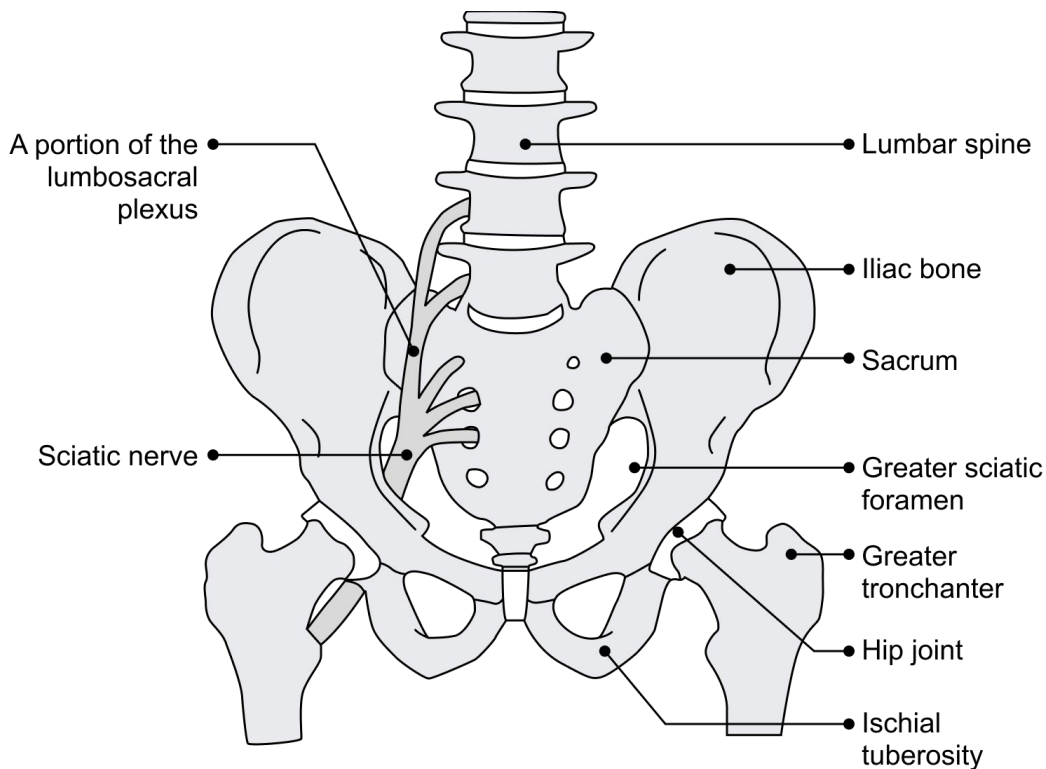


Sciatic Nerve Anatomy Diagram



Akhaddar, A. (2023). Anatomy and physiology of the sciatic nerve. Springer EBooks, 25–45.
https://doi.org/10.1007/978-3-031-44984-0_3

The provided image illustrates the anatomical pathway of the sciatic nerve, originating from the lumbar and sacral spine. Key features labeled in the diagram include:

- **Lumbosacral plexus:** Includes nerve roots from L4, L5, S1, S2, and S3, which form the sciatic nerve.
- **Lumbar spine:** Includes vertebrae L4 and L5.
- **Iliac bone:** Part of the pelvic bone.
- **Sacrum:** The triangular bone at the base of the spine.
- **Sciatic nerve:** Emerging from the lumbosacral plexus and passing through the greater sciatic foramen.
- **Greater sciatic foramen:** The opening through which the sciatic nerve exits the pelvis.
- **Greater trochanter:** A bony prominence on the femur.
- **Hip joint:** The ball-and-socket joint of the hip.
- **Ischial tuberosity:** A bony prominence of the pelvis that bears weight when sitting.

Additional notes