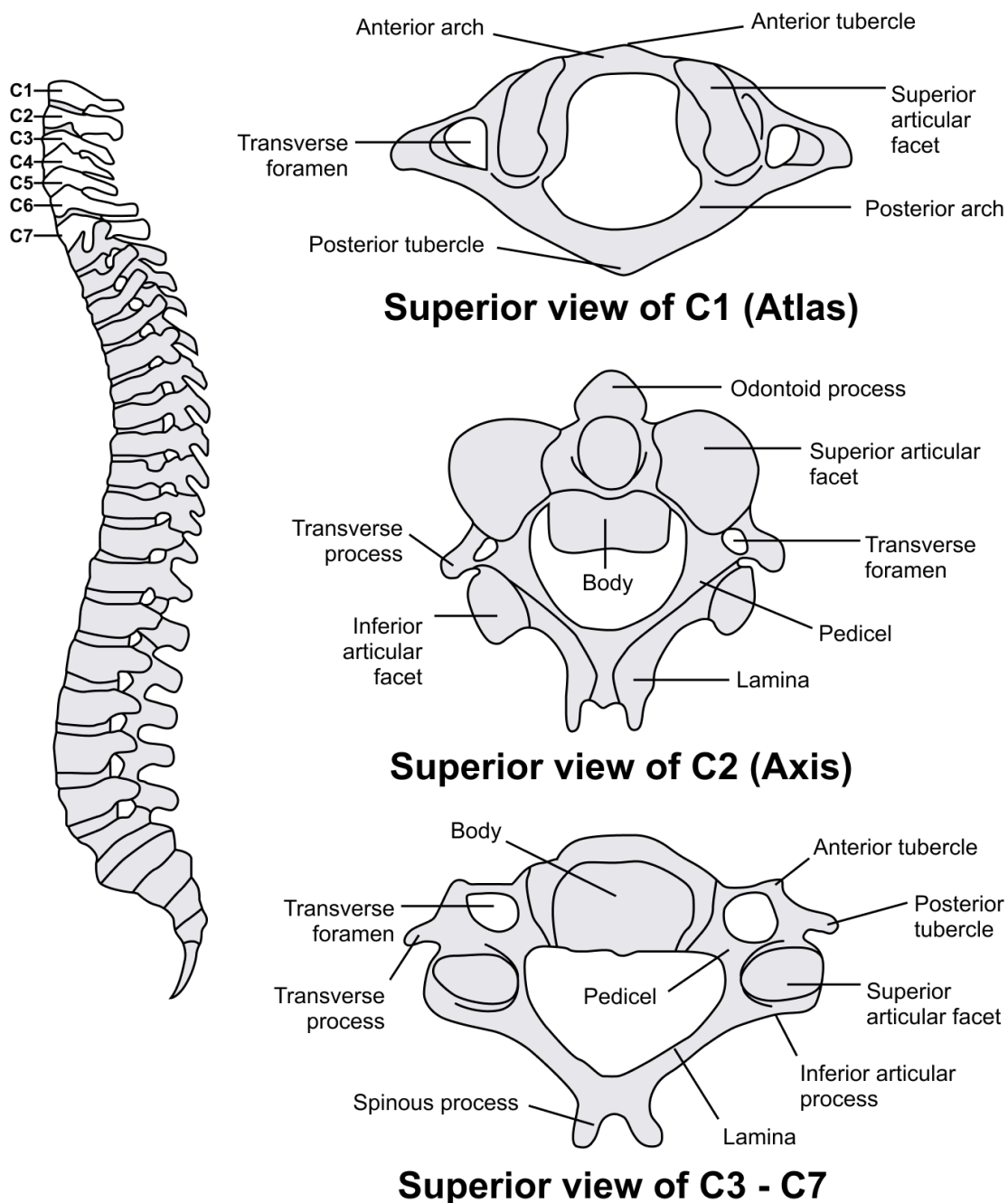


# Cervical Spine Anatomy Diagram



*The Skeletal System. (n.d.). Cervical vertebrae. Retrieved June 12, 2024, from <https://www.theskeletalsystem.net/spine-vertebral-column/cervical-vertebrae.html>*

The diagram provides detailed anatomical views of the cervical vertebrae, which are the vertebrae of the neck portion of the spine. Here is an explanation of the key elements shown in the diagram:

## Cervical spine overview

- **C1 to C7:** These are the seven cervical vertebrae labeled in yellow on the spine's left side.

## Superior view of C1 (Atlas)

- **Anterior Arch:** The front part of the atlas.
  - **Anterior Tubercle:** A small bump on the anterior arch.
  - **Superior Articular Facet:** The surfaces on which the skull rests.
  - **Posterior Arch:** The back part of the atlas.
  - **Posterior Tubercle:** A small bump on the posterior arch.
  - **Transverse Foramen:** Openings in the transverse processes that allow the passage of the vertebral arteries.
- 

## Superior view of C2 (Axis)

- **Odontoid Process (Dens):** A bony projection that the atlas rotates around.
  - **Body:** The main, thick part of the vertebra.
  - **Superior Articular Facet:** Articulates with the atlas above.
  - **Inferior Articular Facet:** Articulates with the next cervical vertebra (C3).
  - **Transverse Process:** Projections on either side where muscles attach.
  - **Transverse Foramen:** Openings for the vertebral arteries.
  - **Pedicle:** The part that connects the body to the rest of the vertebra.
  - **Lamina:** The part between the transverse process and the spinous process.
- 

## Superior view of C3-C7

- **Body:** The main, thick part of each vertebra.
- **Transverse Foramen:** Openings for the vertebral arteries.
- **Transverse Process:** Projections on either side where muscles attach.
- **Pedicle:** The part that connects the body to the rest of the vertebra.
- **Lamina:** The part between the transverse process and the spinous process.
- **Spinous Process:** The bony projection off the back of each vertebra.
- **Superior Articular Facet:** Surfaces that articulate with the vertebra above.
- **Inferior Articular Facet:** Surfaces that articulate with the vertebra below.
- **Anterior Tubercle:** A small bump on the anterior side.
- **Posterior Tubercle:** A small bump on the posterior side.

## General features

- The diagram shows a detailed superior view of the first three cervical vertebrae, C1 (Atlas), C2 (Axis), and a generic representation of C3 to C7.
  - Each vertebra's unique features and common structures are labeled for clear identification.
- 

## Additional notes